

Available for short to mid-term lease
Amtrak Station Trackage and Facilities
730 Transfer Road, St. Paul, MN
(just north of University Avenue)

GREAT CENTRAL LOCATION, IN WESTERN ST. PAUL, WITHIN A FEW BLOCKS OF I94 AND MINNESOTA 280-I35W.

TWO LONG TRACKS, AND PLATFORM ADJACENT TO TRACK ONE AND SOUTH STUB TRACKS PROVIDE AN IDEAL LOCATION FOR TRANSLOADING OF NON HAZARDOUS, NON FLAMMABLE MATERIALS, AUTOS, AND INTERMODAL. ADJACENT PARKING LOTS ARE ALSO AVAILABLE FOR LEASE, AND LEASE OF BUILDING OR PORTIONS CAN ALSO BE CONSIDERED.

SERVED BY MINNESOTA COMMERCIAL RAILWAY, OPEN TO RECIPROCAL SWITCHING AND PROVIDING 24/7 SERVICE WITH DAILY INTERCHANGES TO ALL MAJOR RAILROADS IN THE TWIN CITIES.

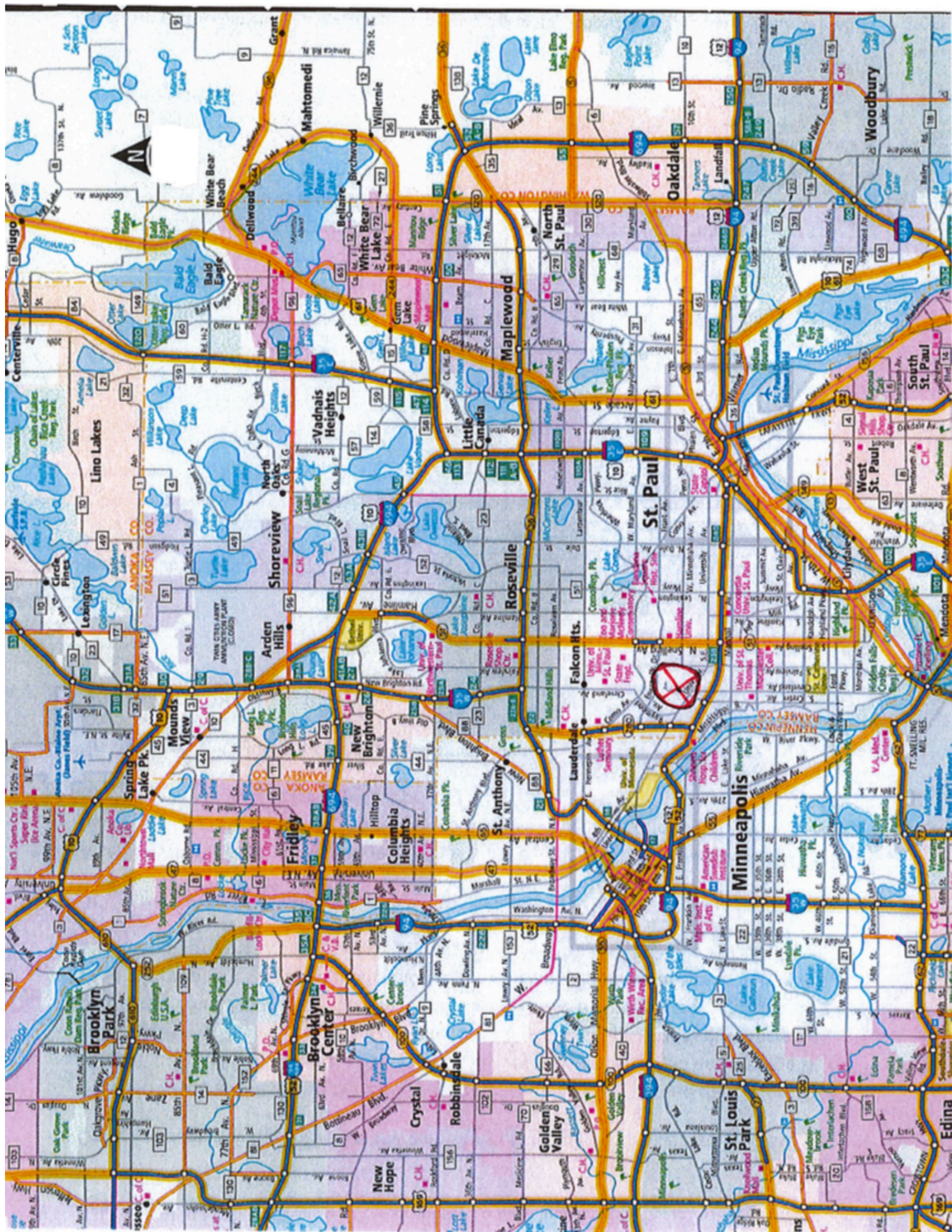
CONTACTS

AMTRAK MORT O'BOYLE, REAL ESTATE DEVELOPMENT MANAGER 215-349-3474

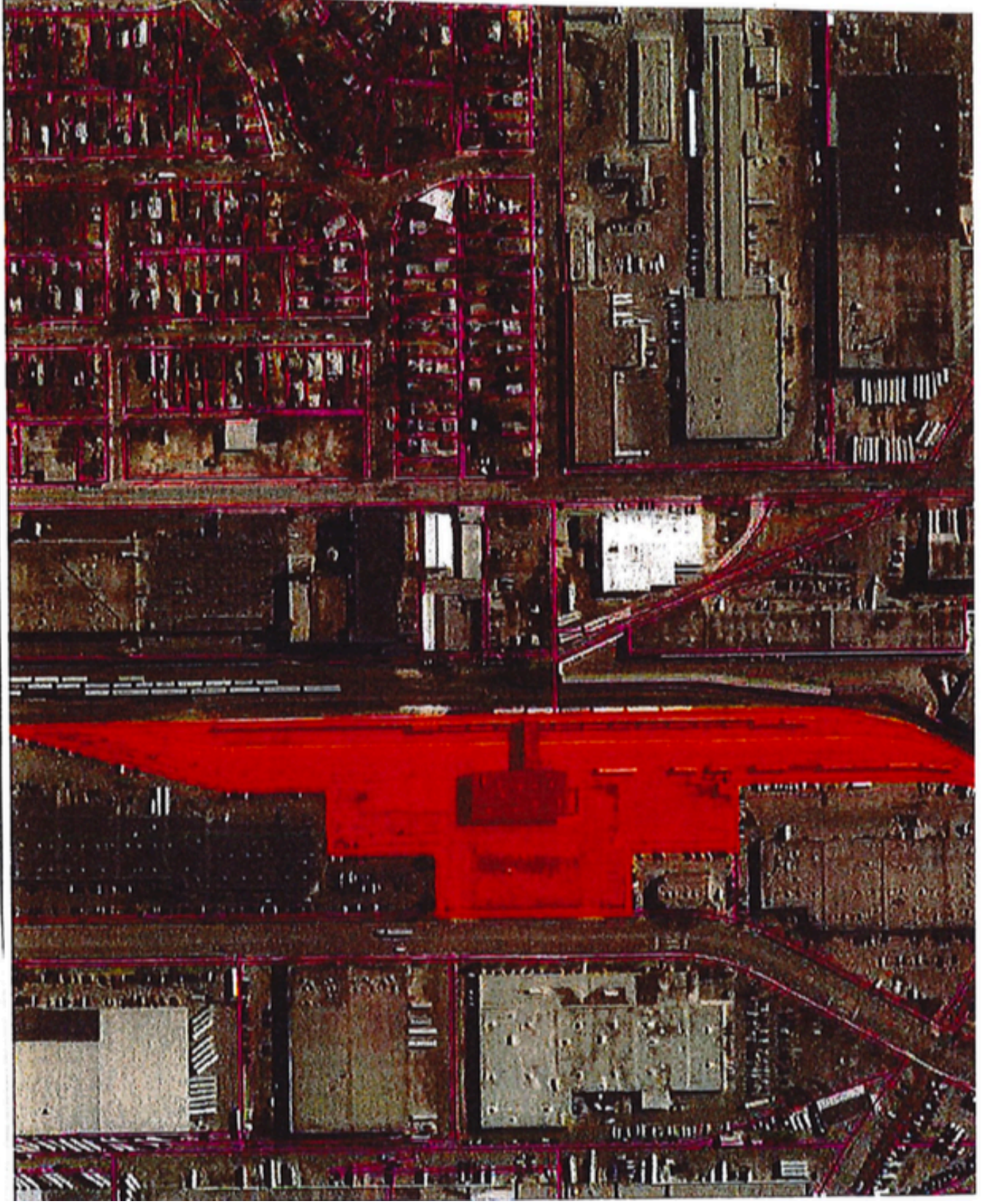
MINNESOTA COMMERCIAL RAILWAY

WAYNE HALL CHIEF OPERATING OFFICER 651-632-9022

JOE KELLNER CHIEF MARKETING OFFICER 651-632-9014



Amtrak Property



✓ MNR Ayl



miles 1

✓ Amtrak Station











